

*Reconstructive Knee, Hip, Trauma and Spinal Devices*



Dedicated to  
delivering better outcomes  
for patients, orthopaedic  
surgeons and hospitals



## PRODUCT PROFILE

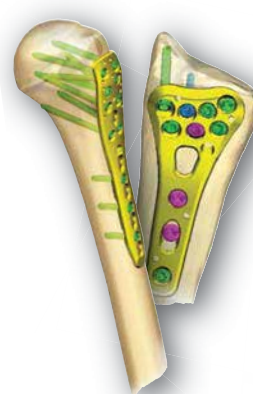
### Knee System



### Hip System



### Trauma



### Spine Systems



### Revision Hip&Knee Systems



Trusted by orthopaedic surgeons and hospitals in Europe, Africa, the Middle East and Latin America



### **Realising the vision**

Covision, is fast becoming recognised as one of the world's leading suppliers of the highest quality, cost-effective, generic orthopaedic implants.

By providing high levels of customer service and product quality, designed to deliver better outcomes for the patients in all the major sectors of orthopaedic surgery, Covision products have become synonymous with providing hospitals, administrators and surgeons with some of the best, most cost-effective and safest orthopaedic implant solutions.

We manufacture the complete range of implants for hip and knee replacements, plates and screws for trauma and reconstructive surgery and spinal implants, in our own state-of-the-art production facility.

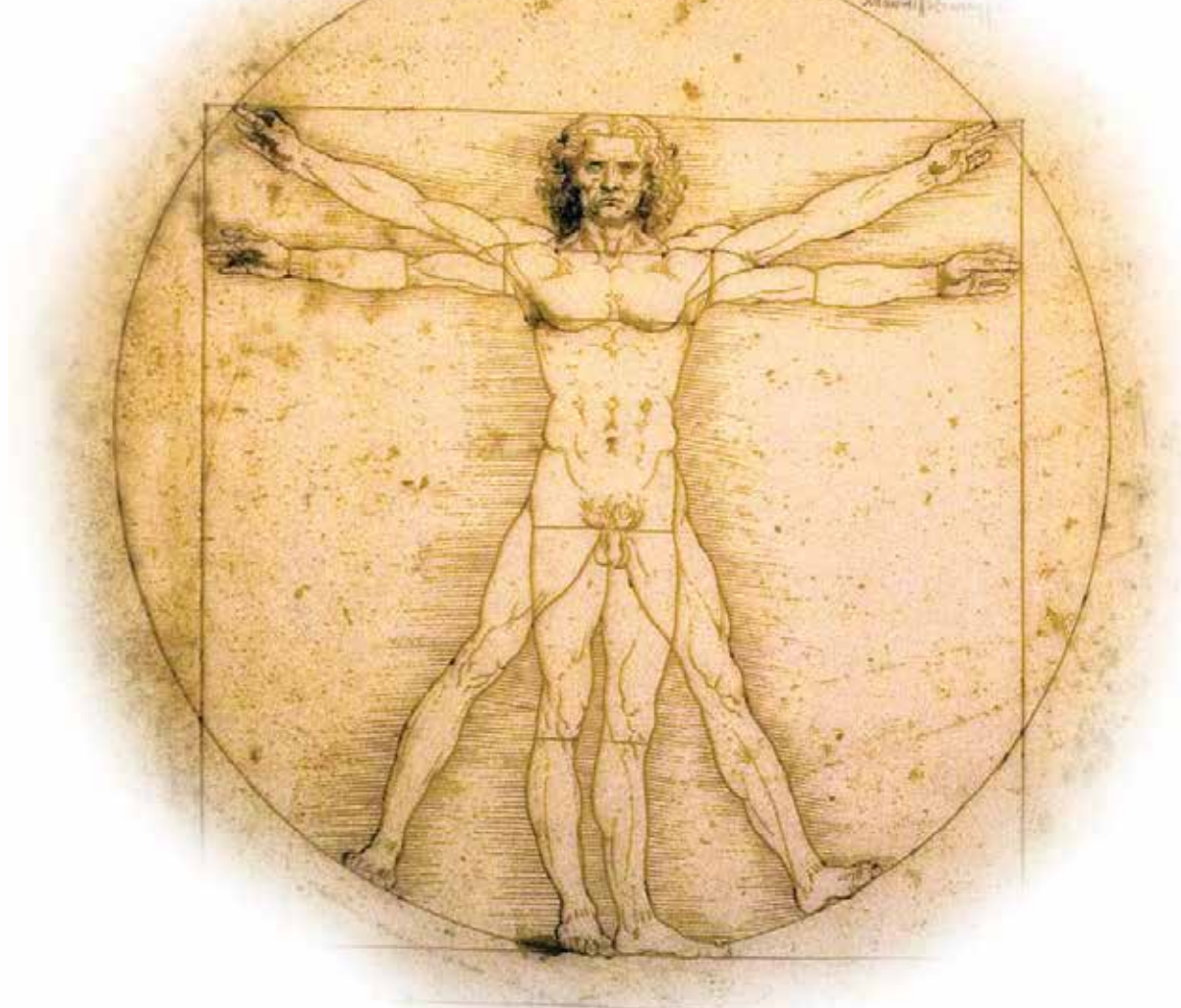
Every product in the range meets all of the CE and MDD regulatory and quality requirements.

### **At Covision, product quality and cost is paramount**

Price pressure in many markets means that the demand for lower cost, high quality, clinically proven generic implants, is growing strongly throughout the world.

Our strong focus on quality coupled with our ability to offer our products at a competitive price is helping surgeons to achieve excellent clinical results, while also reducing the cost of the medical procedures.





## PRODUCT PROFILE



### Knee Systems

- Medial Pivot  
Fixed bearing
- Posterior Stabilised  
Fixed & mobile bearing
- Cruciate Retaining  
Fixed & mobile bearing
- Instruments Sets

PAGE 4



### Hip Systems

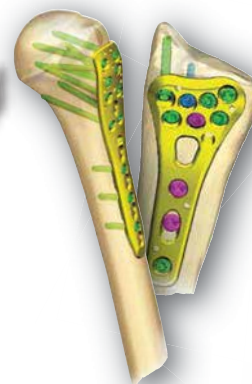
- Stems  
Cemented & Cementless
- Acetabular Cups  
Cemented & Cementless
- Acetabular Liners  
Highly Crosslinked PE  
Ceramic
- Modular Heads  
CoCr, Ceramic, Bipolar
- Accessories
- Instrument Sets

PAGE 5

### Revision Hip&Knee Systems



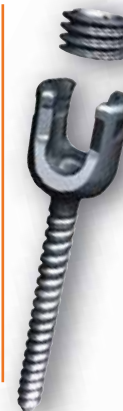
PAGE 6 & 7



### Trauma Systems

- Locking & Compression Plates:  
Metaphyseal  
Diaphyseal  
Reconstruction
- Screws  
Compression  
Locking
- Instrument Sets

PAGE 8 & 9



### Spine Systems

- Pedicle Screws  
Poly-axial & Mono-axial  
Poly-axial Compression
- Bars  
CoCr  
Titanium
- Accessories
- Instruments Sets

PAGE 10 & 11

# Knee Systems

Covision offers a wide range of knee implants with a variety of proven generic technologies.

Our Ancale Knee System and St Leger range includes fixed bearings for both cruciate retaining and posterior stabilised configurations.

The Superica medial pivot knee is currently available in a fixed bearing cruciate retaining option.

The Medial Pivot knees are gaining popularity due to the excellent clinical results and the significant number of patients who forget they have a knee implant.



Covision currently offers three types of knee replacements -

## St Leger Cruciate Retaining C/R St Leger Posterior Stabilized P/S

Some potential advantages of cruciate retaining prosthetic designs include preservation of bone, more normal knee kinematics, increased proprioception, femoral rollback on the tibia during flexion and greater stabilization of the prosthesis. The PCL also helps to prevent anterior translation of the femur on the tibia.

Some potential advantages of posterior stabilised prosthetic designs include a less technically demanding procedure, a more stable component interface with an increased range of motion.

## Superica Medial Pivot M/P

The potential advantages of M/P prosthetic designs include anatomic implant design with a ball and socket articulation throughout the range of motion.

These features work together to enhance stability, drive normal knee kinematics and reduce wear.

This option is gaining popularity amongst medical professionals as these M/P implants are receiving relatively high patient satisfaction ratings.

## ANCALE Knee System

The ANCALE knee system offers surgeons a variety of options depending on disease, deformity and patient demand including cruciate-retaining, posterior-stabilizing primary options.

Designed to provide patients more natural motion and the potential for greater implant longevity



| C/R                        | P/S | M/P |
|----------------------------|-----|-----|
| <b>Femoral Components</b>  |     |     |
|                            |     |     |
| <b>Tibial Components</b>   |     |     |
|                            |     |     |
| <b>Tibial Inserts</b>      |     |     |
|                            |     |     |
| <b>Patellar Components</b> |     |     |
|                            |     |     |
| <b>Stems</b>               |     |     |
|                            |     |     |



# Hip Systems

Covision's hip range includes cemented and cementless stem-and cups in a variety of types.

The cemented stems have different designs and for the various types of the cementless stems we offer different coating options like Ti plasma and HA, partial and complete and single and double coatings

The liners come in different types of PE and there is also a Ceramic option.

The modular heads come in a variety of sizes and can be supplied in CoCr and Ceramic. In addition to the standard heads we also offer uni-polar and bi-polar versions.



**The designs of our implants are based on well proven technologies whose long term use has been proven to deliver excellent clinical outcomes.**

We offer orthopaedic solutions for each implant scenario including all cemented, cementless, hybrid and reverse hybrid approaches and procedures.



# Revision Hip&Knee System

Covision also provide Revision Hip& knee implants with a variety of proven generic Technologies for use in the event of severe bone deficiency, as well as other complicated cases.

## Reflecto Revision Knee System

Can be used with augments and extension stem options to manage soft tissue and bone defects.

Improved Design for Optimal Function

- Constrained design with safety screw locking mechanism provides more secured stability



## Femoral Augment (Posterior and Distal)

Posterior



Distal



- Titanium alloy
- Posterior augment – 6 sizes and 2 thicknesses (5, 10 mm)
- Distal augment – 6 sizes and 2 thicknesses (12 and 16 mm)
- Screw fixation



- Maximum Range of Motion (ROM) from 129 degrees to 134 degrees

## Integro Revision Hip System

### Modular fit and fill revision stem philosophy

Designed to promote fit and fill, Integro Revision Hip System is a fully modular revision system. The tapered distal stems are designed to limit distal impingement and encourage proximal loading.

All Components are fully interchangeable.

Potential to obtain the best possible stability and adaptation of the system to the femoral anatomy



### Instrument Sets

Each hip&knee system has a dedicated instrument set that is supplied in a number of metal cases. These instrument sets and all the implants are produced in our manufacturing facility.





# Trauma Systems

The trauma portfolio from Covision includes a very broad range of titanium plates and screws for almost every indication. Covision trauma portfolio also offers Canulated and Headless screws system to treat a variety of indications in small bone extremities.

The set includes locking, reconstruction and compression plates with a variety of compatible screws.

## **These include -**

- A range of dedicated plates for metaphyseal fractures
- Wrist fusion plates
- Tubular plates
- Small fragment plates
- Large fragment plates
- Reconstruction plates

## **We also offer screws in a variety of diameters including -**

- Locking screws
- Locking pegs
- Cortical screws
- Fully and partially threaded cancellous screws

## **Cannulated and Headless screws -**

- Screw fixation, with intuitive instrumentation designed to simplify the surgical technique
- To treat a variety of indications in small bone extremities
- With a narrow trailing diameter provide the perfect solution for small bone fusions
- Excellent compression aid in achieving proper bone healing





## Instrument Sets

The instrument sets are procedure specific and divided in three sets and each has its related implant cases.

- Wrist instruments
- Small fragment instruments
- Large fragment instruments

All the implants and instrument sets are made in our manufacturing facility.





# Spine Systems

Covision offers a wide range of pedicle screws and related components such as connectors and bars to address even the most challenging spinal pathology.

The pedicle screws are available in either a mono-axial or poly-axial design and have a dedicated instrument set for the complete system.

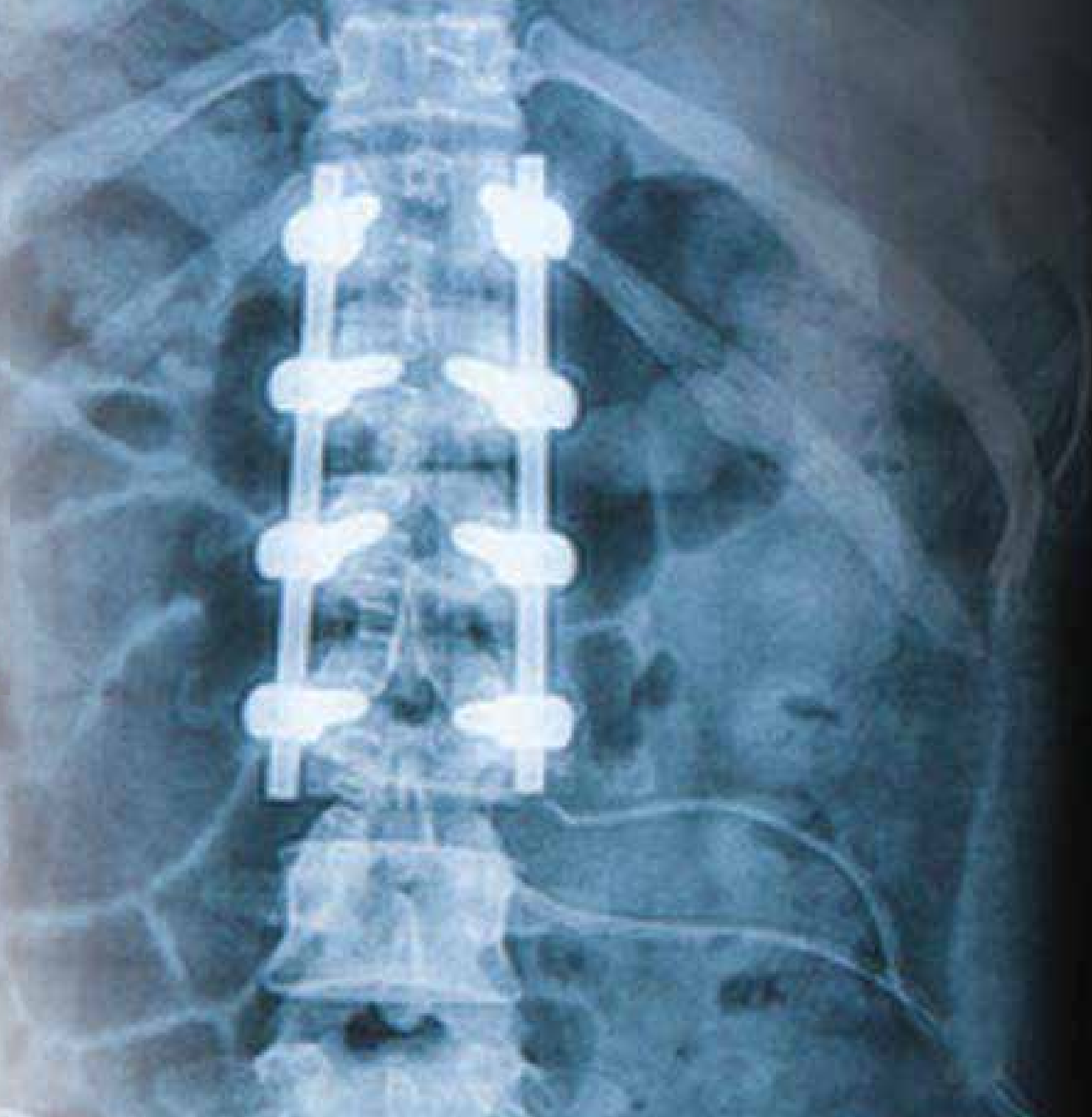
These implant design options are well





### Instrument Sets

The dedicated instrument set and implants are made in our manufacturing facility.





Covision Orthopaedics has been an ISO 9001 and ISO 13485 certified designer and manufacturer of orthopaedic implants and instrumentation for over 20 years

CCP 11.21 V3

